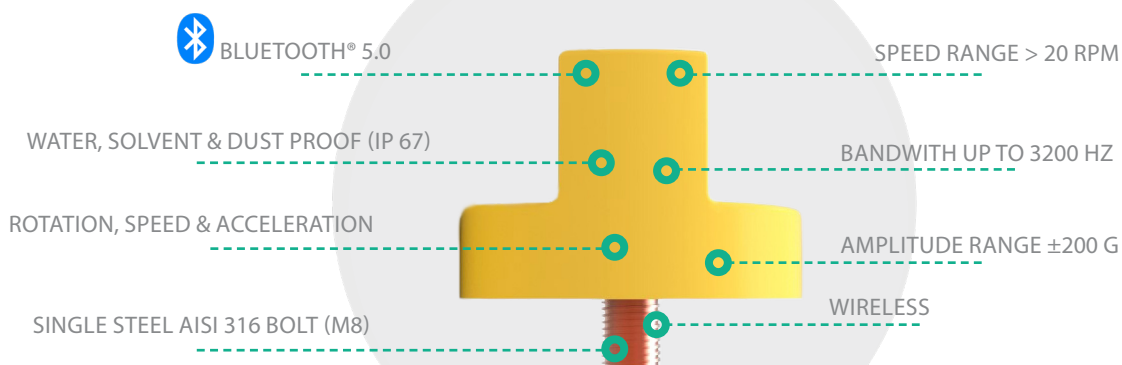


Take 'countroll' of your rollers

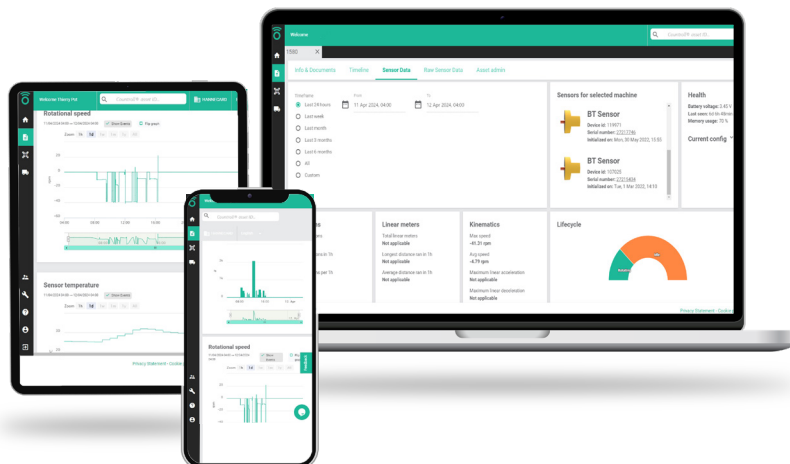
The countroll® sensor has specially been crafted for rotating equipment and industrial rollers. This innovative wireless device accurately measures speed, acceleration, and rotation count, minimizing downtime, extending machinery lifespan, and streamlining production workflow.

Seamlessly transmitting data via Bluetooth®, the countroll® sensor connects to the countroll® app device or designated gateway, ensuring effortless monitoring and control of your rollers.

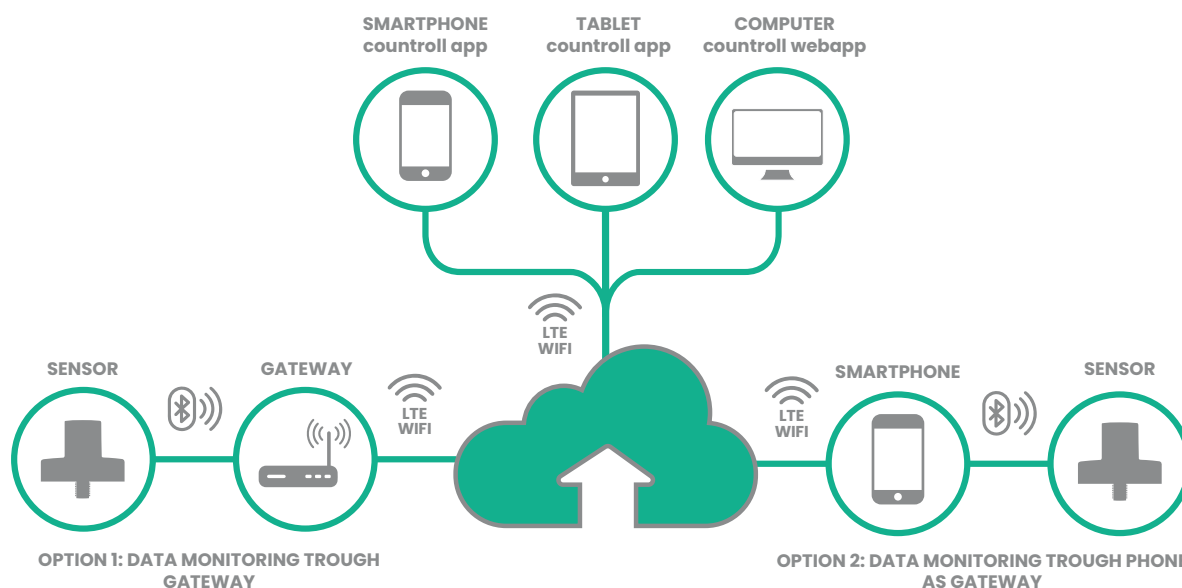


Easy access thanks to the customized web portal

- Gather insights on rotations, run-time, idle-time, speed and linear km of production
- Results are intuitively displayed in a web browser
- Detect roller and slip issues
- Machine & production process optimization
- roller lifecycle insights & anomaly detection
- Less unplanned production stops
- Extraction of line speed deceleration and acceleration



How it works



Pricing

€ 99,00 per sensor/month

€ 30,00 gateway/month

- Multi-User platform access
- Advanced data capture:

precise speed monitoring, acceleration measurement, rotation count tracking

- Graphical speed, acceleration and rotation visualization
 - Secure Data Management
- Flexible Subscription Model. Can be stopped at any time
 - Custom pricing for larger quantities

TECHNICAL SPECIFICATIONS

	Sensor	Gateway
Dimensions HxWxD (mm)	32,5x46,5	40x88x88
Weight	72 g	125
Power supply	Non replaceable 2/3 AA 3.6 Volt battery	5V adaptor
Wireless communication	Bluetooth BLE	Bluetooth, LTE, WIFI
Battery life	Config dependent	
Measurement cycle	Up to every 2 minutes	
Physical connection	Single Bolt Mounting (M8)	
Wireless communication	Bluetooth BLE (up to 20 m)	
Expected lifetime	6 months - 2 years	
Rotational speed range	> 20 rpm	
Rotational precision	0,5%	
Operating temperature	-20°C to +85°C	
Storage temperature	-40°C to +85°C	
Vibration bandwidth	3.2kHz	
Vibration amplitude range	±200 g	
Vibration resolution	12-bit output at 100 mg/LSB	
Ingress protection	IP67	
Certifications	CE certified	
Materials	Mounting base: steel AISI 316 Housing: Polycarbonate	